

LEVEL 3 SKILLS RESOURCE:

Geneva, Switzerland



Super sleek, slick and cosmopolitan, Geneva is a rare breed of city. It's one of Europe's priciest. Its people chatter in every language under the sun and it's constantly thought of as the Swiss capital - which it isn't. This gem of a city superbly strung around the sparkling shores of Europe's largest Alpine lake is, in fact, only Switzerland's third-largest city.

Yet the whole world is here: the UN, International Red Cross, International Labour Organization, World Health Organization. You name it, they're in Geneva; 200-odd top-dog governmental and nongovernmental international organisations meting out world affairs with astonishing precision and authority. They fill the city's bounty of plush four- and five-star hotels with big-name guests. They feast on an incredulous choice of international cuisine, cooked up by restaurants to meet 'local' demand. And they help prop up the overload of banks, luxury jewellers and chocolate shops for which the city is known. Strolling through manicured city parks, sailing on the lake and skiing in the Alps next door are hot weekend pursuits.

Read more: <http://www.lonelyplanet.com/switzerland/geneva#ixzz35nfpLhsE>

Complete the tasks using the resources.

Resource A:

Photograph of the city of Geneva



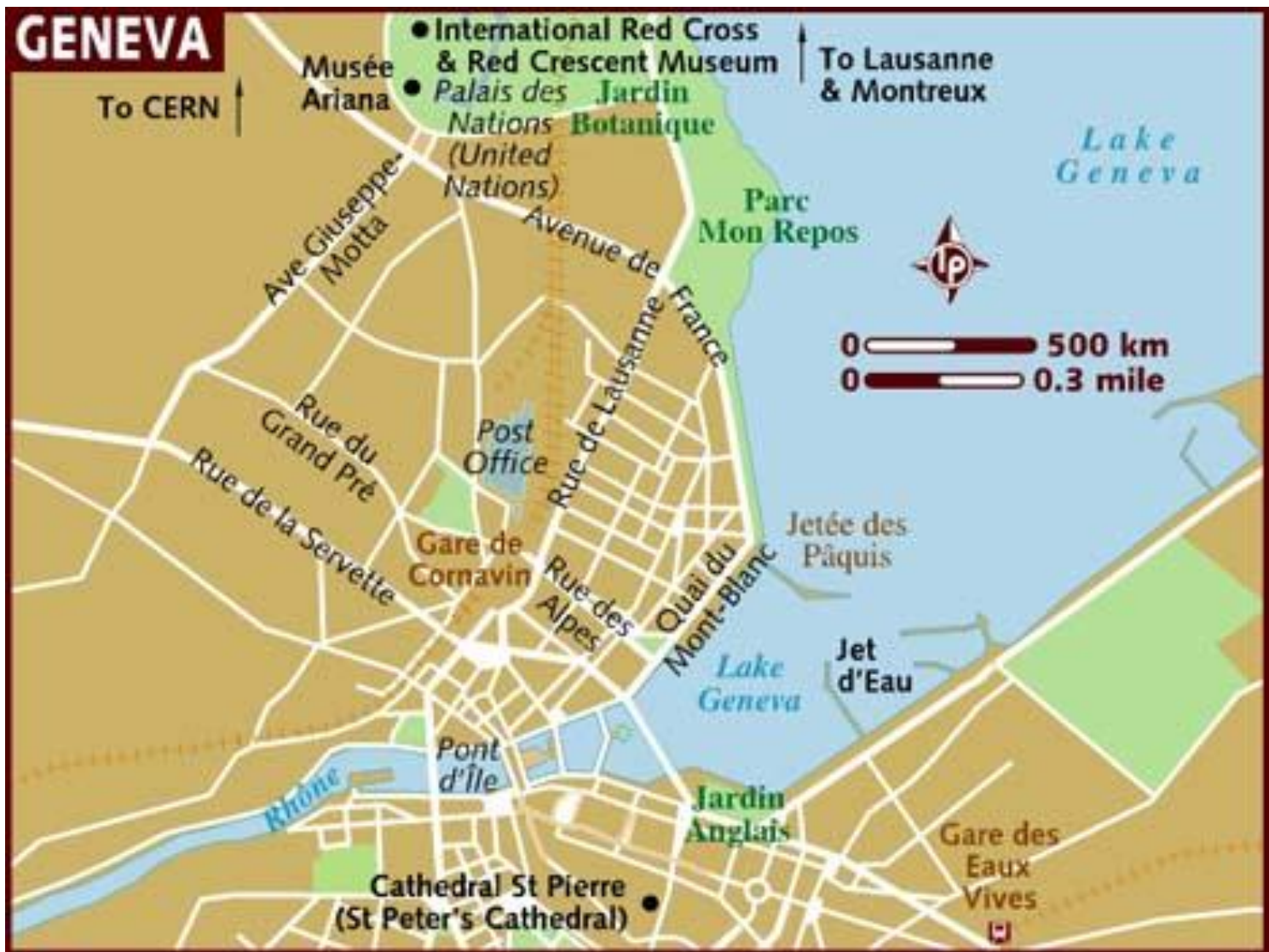
Resource B: Map of Switzerland



Resource C: Map of Switzerland



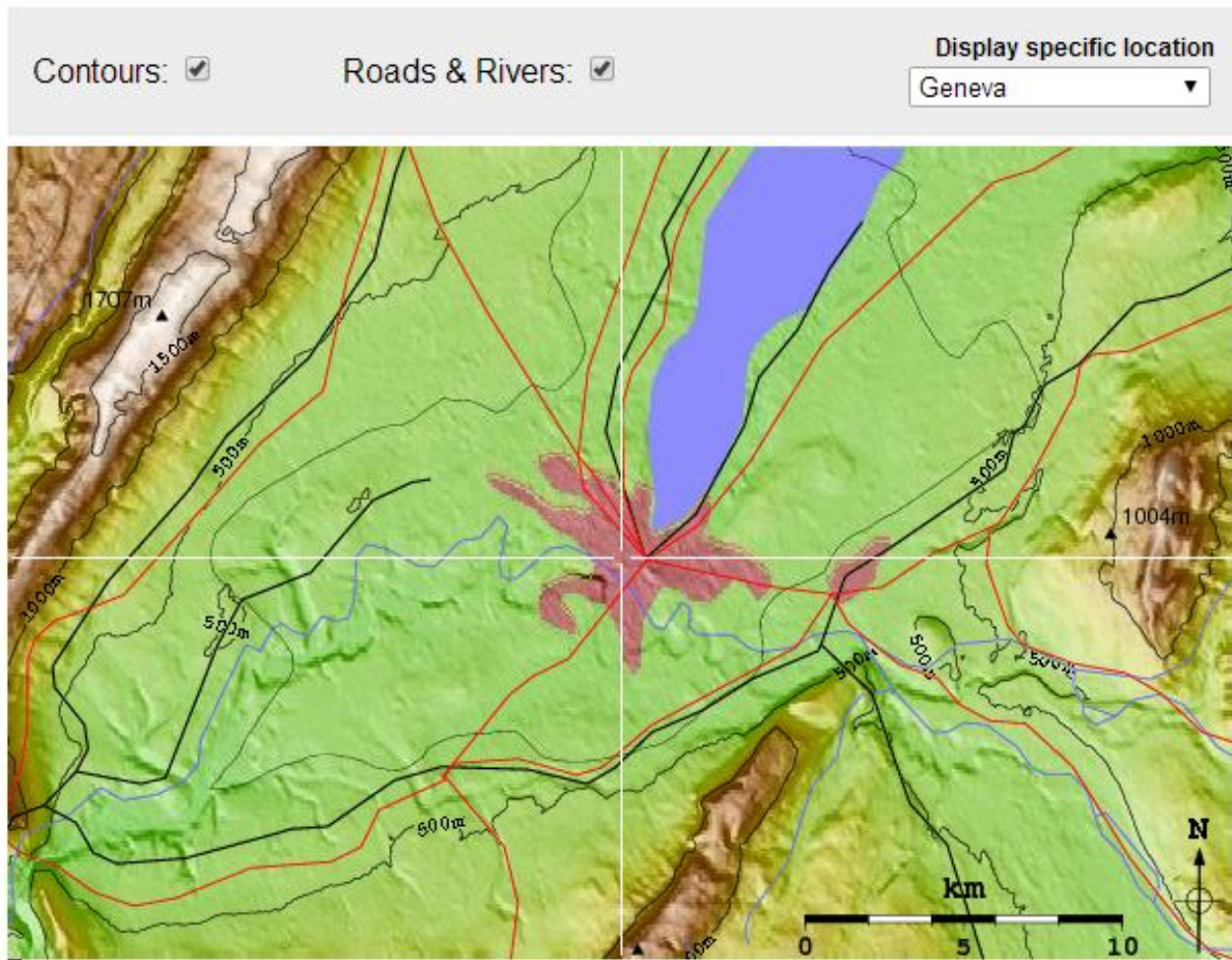
Resource D: Map of the city of Geneva



Resource E: Image of Lake Geneva and surrounding landforms

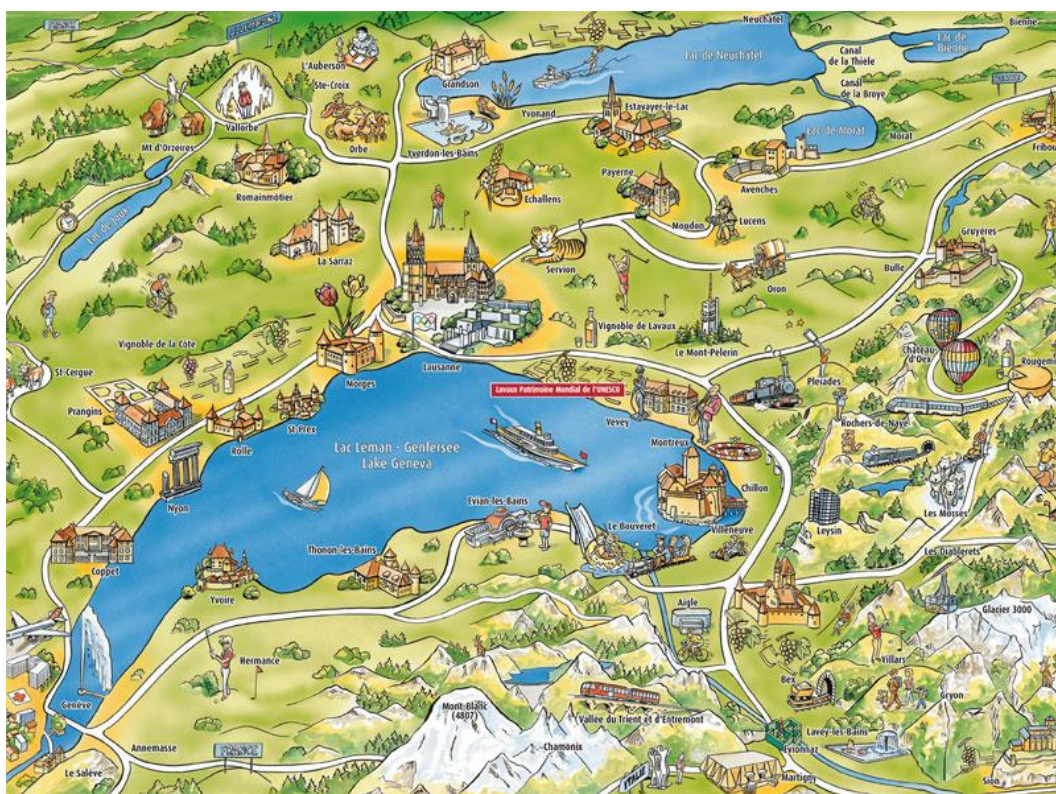


Resource F: Topographic map of Geneva



The above topographic map of Geneva and the surrounding area has been derived from satellite mapping. The topographic data has been illuminated by a light source corresponding to the position of the sun at mid afternoon in summer. Major roads, railways rivers and other water features are derived from global GIS data.

Resource G: Tourist Map of Lake Geneva

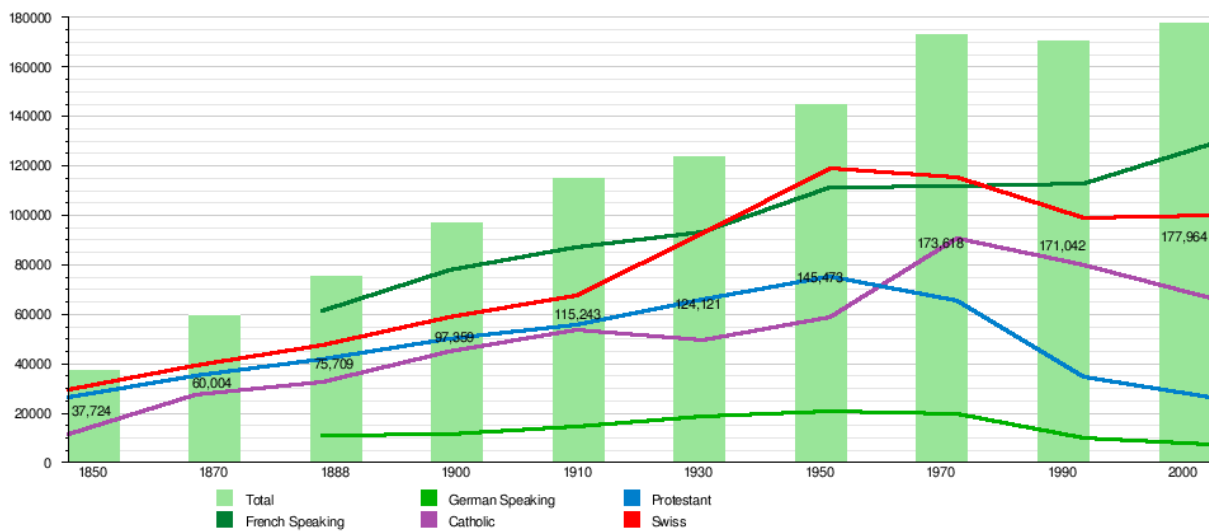


Resource H: Climate data for Geneva

Month	Jan	Feb	Mar	Apr	May	Jun	Jul	Aug	Sep	Oct	Nov	Dec	Year
Average high °C	4.5	6.3	11.2	14.9	19.7	23.5	26.5	25.8	20.9	15.4	8.8	5.3	15.2
Precipitation mm	76	68	70	72	84	92	79	82	100	105	88	90	1,005
Snowfall cm (inches)	10.8	8.1	2.8	0.2	0.0	0.0	0.0	0.0	0.0	0.0	2.8	7.4	32.1
Avg. precipitation days (≥ 1.0 mm)	9.5	8.1	9.0	8.9	10.6	9.3	7.6	7.9	8.1	10.1	9.9	10.0	109.0
Avg. snowy days (≥ 1.0 cm)	2.5	2.0	0.9	0.1	0.0	0.0	0.0	0.0	0.0	0.0	0.7	2.0	8.2
% humidity	81	76	69	67	69	66	64	67	73	79	81	81	73
Mean monthly sunshine hours	59	88	154	177	197	235	263	237	185	117	66	49	1,828

Source: MeteoSwiss

Resource I: Population of Geneva



Tasks:

1. Refer to Resource A

Which direction is the photographer facing to take this photograph? _____

2. Refer to Resource B

Accurately describe the location of Geneva

3. Refer to Resource C

What is the distance (in kilometres) between Geneva and the capital of Switzerland? _____

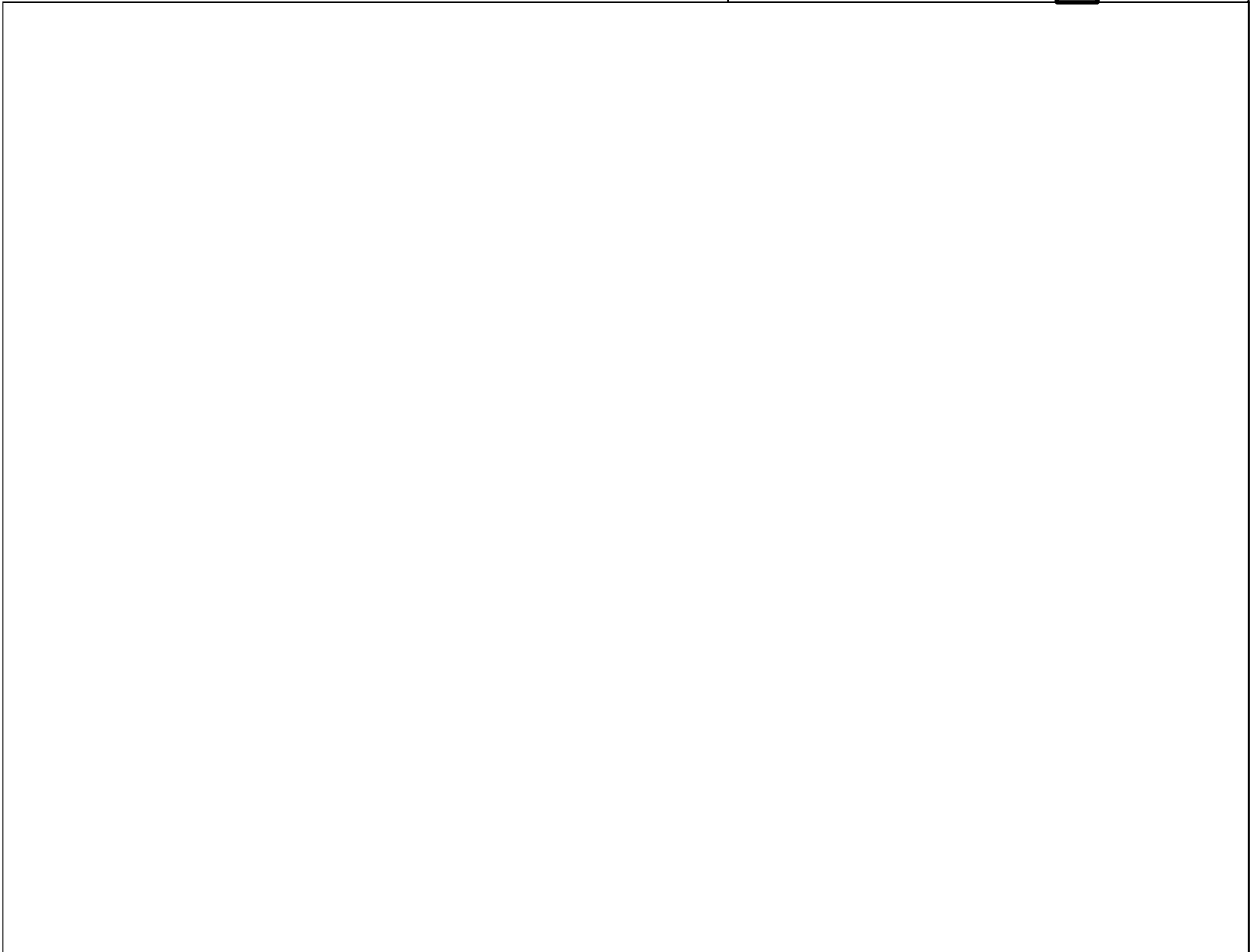
4. Refer to Resource D

In the frame below construct a Precis Map of the following features:

- The lake and river shore line
- The Post office
- St Peter's Cathedral
- Red Cross Museum

Key:

The lake and river shore line	<input type="checkbox"/>
The Post office	<input type="checkbox"/>
St Peter's Cathedral	<input type="checkbox"/>
Red Cross Museum	<input type="checkbox"/>



5. Refer to Resource E

Which direction is this image facing? _____

What two countries are shown in this image? _____

6. Refer to Resource F

Construct a cross section between the two mountain peaks

7. Refer to Resource G

What is name and height of the mountain to the west of Geneva? _____

8. Refer to Resource H

Construct a climate graph for Geneva using the appropriate information from the table

9. Analyse the climate graph and describe the patterns that are shown

10. Refer to Resource I

Analyse the information shown in this graph and write a paragraph incorporating at least 2 geographic concepts. Include supporting evidence from the graph in your response.
