

# Aerial Photographs

The two main types of Aerial photographs are oblique (taken from an angle) and birds eye view/vertical (taken from directly above).



Wellington Railway Station and  
WestpacTrust Stadium

Vertical  
Photographs



City Centre, Dunedin



Vertical Photo of the Port of  
Tauranga and Mount Maunganui



Oblique photo of the Port of  
Tauranga and Mount Maunganui.

You may have to sketch from aerial photographs or analyse and interpret them.

If there are two or three photos of the same place you will probably be asked to look for changes/differences between the two. Do not comment on things that may move e.g. cars, tides, clouds etc.

Mt Roskill 1940



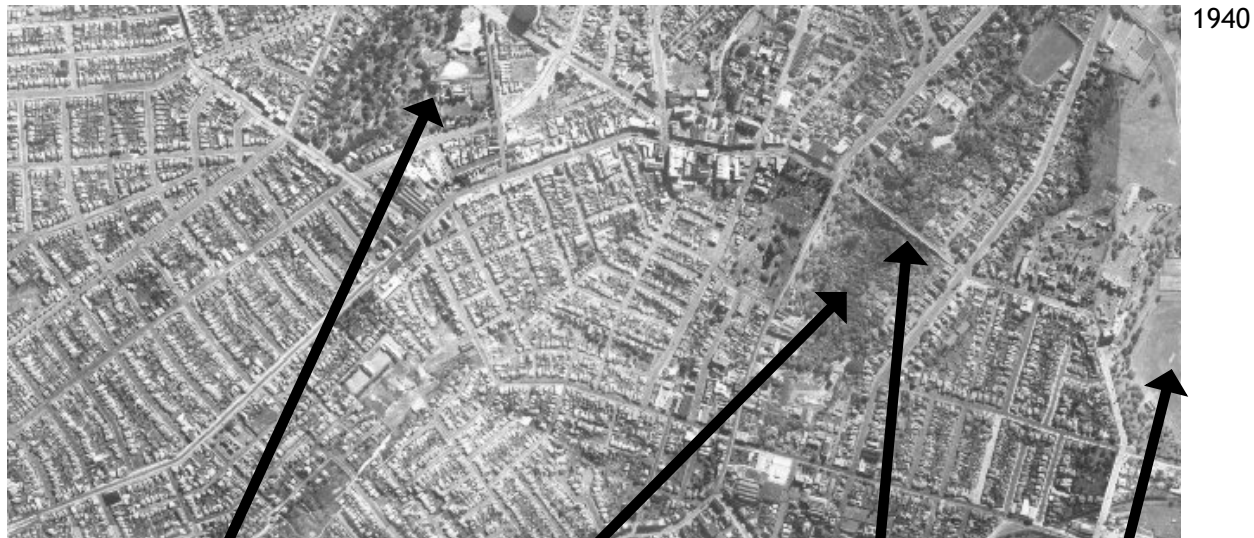
These two vertical photos have been taken of Mt Roskill, one in 1940, the other in 2001. The photos are taken at different heights, but generally show the same area. What was Mt Roskill like in 1940? - rural area, lots of open space (possibly paddocks/farmland), some houses on main road. What was Mt Roskill like in 2001? - large built-up area, no paddocks left, some smaller areas of grass (probably parks and sports fields)

Mt Roskill 2001





Try these two photos. The top one is of the Newton area in 1940. The bottom one is of the same area in 2001. Some features have been labeled. What changes can you see?



1940

Auckland Girls'  
Grammar School

Grafton Gully

Grafton  
Bridge

Domain



2001